

# KENTUCKY MILITARY INSTITUTE "KAYDETS"

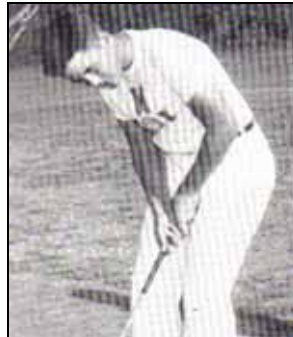
KCD ADOPTED SCHOOL, 1845-1971



DANNY SULLIVAN  
1968 - TRACK MEMBER - STATE CHAMPION 880 YARD RELAY TEAM (WITH REIFF, KAUFMANN, IRVIN) 1:34.0  
1967 - CAPTAIN, MVP SOCCER



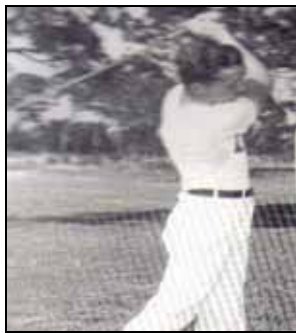
DANNY SULLIVAN  
1968 KMI GRADUATE  
-1985 INDIANAPOLIS 500 WINNER



GEORGE STIGGER  
1956 - GOLF STATE CHAMPION  
1955 - GOLF STATE CHAMPION  
1954 - GOLF STATE 8<sup>TH</sup> PLACE  
1953 - GOLF STATE 49<sup>TH</sup> PLACE



BOB RAY  
1947 - FOOTBALL TEAM CAPTAIN,  
14 CAREER TOUCHDOWNS  
UNDEFEATED KMI TEAM  
(SHRINE BOWL CHAMPIONS,  
14-0 OVER ST. XAVIER)  
ATTENDANCE: 8,000



CHARLES HUDGINS  
1954 - GOLF STATE 29<sup>TH</sup> PLACE  
1952 - GOLF STATE 47<sup>TH</sup> PLACE



JIM BURKHOLDER  
1936 - GOLF STATE CHAMPION



GEORGE EVANS  
1950 - DIVING STATE CHAMPION



WILLIAM BRISLAN  
CAPTAIN, STARTING GUARD  
1936 UNDEFEATED BASKETBALL  
TEAM (16 WINS, 0 LOSSES)



MAJOR JOHN E. "Rabbit" PACE  
1947-54 ATHLETIC DIRECTOR,  
1927-57 HEAD FOOTBALL COACH

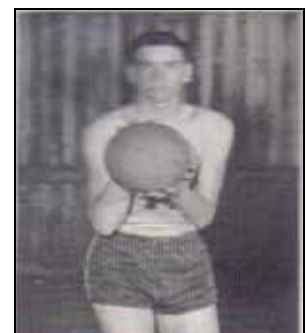
1947 - UNDEFEATED 10-0  
FOOTBALL SEASON



1908 KMI BASEBALL TEAM



DAVE PEDLEY  
1956 - GOLF STATE 14<sup>TH</sup> PLACE  
1955 - GOLF STATE 16<sup>TH</sup> PLACE  
1954 - GOLF STATE 38<sup>TH</sup> PLACE



WILLIAM MICHAEL  
1950 - CAPTAIN, TOP SCORER  
UNDEFEATED (17 W, 0 L)  
BASKETBALL TEAM

# KENTUCKY MILITARY INSTITUTE "KAYDETS"

KCD ADOPTED SCHOOL, 1845-1971



ROCKY REIFF

1969 -TRACK STATE RUNNER-UP  
(880 YARDS -2:05.2)  
-STATE 4<sup>TH</sup> PLACE  
(440 YARDS -52.9)  
1968 -TRACK MEMBER -STATE  
CHAMPION 880 YARD  
RELAY (W/ SULLIVAN,  
KAUFMANN, IRWIN -1:34.0)  
-STATE 3<sup>RD</sup> PLACE  
(440 YARDS)



DON KURFEES

1951 -TRACK STATE RUNNER-UP  
(HIGH JUMP)



BOBBY BEST

1966 -TRACK STATE RUNNER-UP  
(100 YARD DASH, 10.0)



GARY KLUGE

1967 -BASKETBALL LEADING  
SCORER (17.7 GAME AVG,  
354 POINTS)



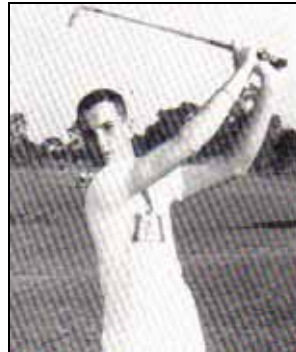
BRUCE WARREN

1954 -BASKETBALL LEADING  
SCORER -311 POINTS  
(TEAM 12 WINS, 5 LOSSES)



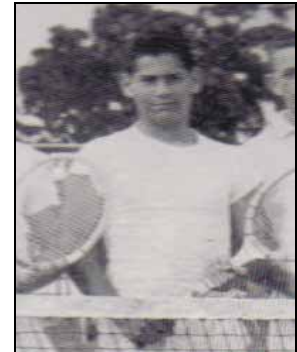
COLONEL CHARLES BLAIR  
RICHMOND

1925-1965 PRESIDENT,  
KY MILITARY INSTITUTE



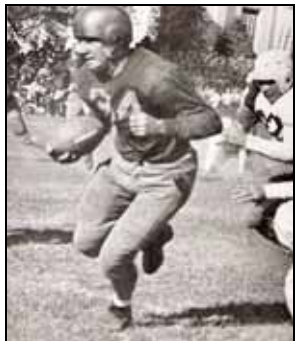
BILL BEAM

1953 -GOLF STATE 22<sup>ND</sup> PLACE  
1952 -GOLF STATE 30<sup>TH</sup> PLACE  
1954 -GOLF STATE 44<sup>TH</sup> PLACE



STUART COHEN

1958 -TENNIS STATE SINGLES  
RUNNER-UP  
1957 -TENNIS STATE DOUBLES  
RUNNER-UP (W/ D. YORK)  
STATE SINGLES  
SEMIFINALIST



BILL ROWEKAMP

1948 -KENTUCKY STATE  
LEADING SCORER  
-153 SEASON POINTS  
-28 SEASON TOUCHDOWNS

TOM PARKHILL  
1961 -GOLF, STATE CHAMPION



# KENTUCKY MILITARY INSTITUTE

Established 1845, Kentucky Military Institute was adopted by KCD after its closure in 1971

Nickname: *“Kaydets”, (formerly “Cadets” and “Big Blue Wave”)*

Colors: *Blue and Gold*



## KMI KAYDET CROSS COUNTRY

Established 1956 -under the direction of Lt. Charles Norman

### KMI CROSS COUNTRY REGIONAL CHAMPIONSHIPS

1959 10<sup>TH</sup> Place

### KMI CROSS COUNTRY NOTABLE SCORES

1958 KMI 27, Eastern 28

Caywood 2<sup>nd</sup>, Schubert 3<sup>rd</sup>



## KMI KAYDET FOOTBALL

### KMI FOOTBALL SEASON HONOR ROLL

1947 10 Wins, 0 Losses

6 season shutouts, “Shrine Bowl” Winner over St. Xavier 12-0

8,000 attendance on a soggy field,

(Post Season Charity Game sponsored by the Lexington Oleika Temple for a crippled Children fund choosing the two best high school teams available),

#4 State Litkenhous rating, double-wingback offense, 25 varsity letters,

Head Coach John “Rabbit” Pace, Fullback Henry Prosack 80 season points,

Team Captain Bob Ray (Tailback, Punter, Kicker)

1941 9 Wins, 0 Losses

First KMI undefeated season

1948 9 Wins, 1 Loss

Shrine Bowl Winner, Captain Alan Head

1935 8 Wins, 2 Losses

1963 6 Wins, 1 Loss, 1 Tie

5 straight shutouts

1945 5 Wins, 1 Loss

#5 State Litkenhous rating

1946 5 Wins, 3 Losses

1928 5 Wins, 2 Losses, 1 Tie

Known as the “Big Blue Wave”, considered “best team in 20 yrs”.

1927 4 Wins, 2 Losses, 1 Tie

Kentucky Prep School Championship (“Big Blue Wave”)

### KMI FOOTBALL HONOR ROLL

1960 Frank Stalcup, Back

All Jefferson County (Second Team)

1960 Joe Fishman, End

All Jefferson County (Hon. Mention), All-State (Hon. Mention)

1960 Bill Baldwin, Tackle

All Jefferson County (Hon. Mention)

1957 Johnny Saltsman

All Jefferson County, All-State (Hon. Mention)

1957 Bill McCord

All Jefferson County

1948 Bill Rowekamp

State Leading Scorer (153 season points)

1947 Bob Ray

Team Captain of Undefeated Squad (14 career touchdowns)

1930	<b>Joe Dougherty</b>	Team Captain (4 wins, 3 losses)
1929	<b>William Tillman</b>	Team Captain
1928	<b>Leo Broecker</b>	Team Captain

### **KMI FOOTBALL NOTABLE SCORES**

1968	KMI 20, Henry County 7	TD: Bardwell -2, Richmond
1968	KMI 19, Breckinridge County 6	TD: Reiff -2, Ward
1968	KMI 31, Louisville Country Day 6	TD: Reiff -3, Richmond -2
1967	KMI 26, Shelbyville 6	TD: Irwin -3, Hirsh
1967	KMI 25, Eminence 6	TD: Irwin -3, Richmond
1966	KMI 60, Henry County 21	TD: Miller -4, Aldous, Miller to Thompson, Kluge, Kelly, Irvin
1966	KMI 38, Iroquois 30	TD: Irvin, Miller-3, Miller to Ingram, Aldou
1965	KMI 16, Franklin County 7	TD: E. Miller, DeShazo to Forrester
1965	KMI 13, St. Joseph 6	TD: E. Miller, Miller to Thompson
1964	KMI 25, Oldham County 18	TD: LeBlanc -2, DeShazo to Yeiser & Skelton
1964	KMI 20, Beechwood 7	TD: LeBlanc, Deshazo to Miller -2
1963	KMI 27, Henry County 0	TD: Ponder -2, Leblanc to Sharp & Nelson, Rice
1963	KMI 6, Fort Knox 0	TD: LeBlanc
1963	KMI 25, Tompkinsville 0	TD: Waller -2, Fisher, Simmons, Xpt: Nelson
1962	KMI 27, Oldham County 7	TD: Gills, Waller to Nuckolls, Steen, Nuckolls to Emerick
1962	KMI 44, Carrollton 0	TD: Emerick -2, Steen -2, Waller, Cunningham, Nuckolls
1961	KMI 27, Carrollton 0	TD: Oakley, Emerick, Danahy, Parker, Xpts: Danahy -3
1961	KMI 26, Pleasure Ridge Park 6	TD: Danahy -2, Parker -2, Xpts: Danahy -2
1961	KMI 19, Tompkinsville 13	TD: Danahy 78 yard 4 <sup>th</sup> quarter run for winning score:
1960	KMI 27, Catholic Country Day 12	John Waller: 52 yard run
1960	KMI 7, Beechwood 0	TD: Dunn, Key play: Jackson to Crawford pass
1959	KMI 20, Beechwood 0	TD: McCune -2, Thorton
1959	KMI 12, Lebanon 6	TD: White -2
1958	KMI 14, DeSales 13	Johnny Saltsman: winning TD and Xpt
1956	KMI 19, Fern Creek 12	John Garekis: winning TD, Xpt: Beckett
1955	KMI 19, Beechwood 7	TD: Bailey, Brandon, Finlaw, Xpt: Francis
1954	KMI 33, Elizabethtown 0	TD: Buckner -3, Murray, Callanen, Xpts: Pace -3
1954	KMI 20, Southern 0	TD: Brandon, Callanen, Gurney, Xpts: Pace -2
1954	KMI 41, Beechwood 0	TD: Buckner -2, Richmond, Miniard, Gurney, Tway to Combs
1953	KMI 24, Morganfield 0	TD: Buckner, Richmond, Whitaker
1953	KMI 32, Culver Military Institute 6	TD: Buckner -3, Richmond -2
1951	KMI 18, Sewanee Military Institute 7	TD: Joe Scales -2, Joe Cupano -1, Kollar & Stevens defensive plays
1949	KMI 13, Culver 0	TD: Egelton, Regenold
1948	KMI 32, Somerset 0	Shrine Bowl Game, TD: McGuire, Rowekamp -3, Hackett
1948	KMI 35, Jeffersonville 0	TD: Rovekamp -3, McGuire, Evans
1948	KMI 18, Lexington Lafayette 0	TD: Rovekamp -3
1947	KMI 13, St. Xavier 0	Shrine Bowl Game, TD: Prosack, DeGasperis, attendance: 8,000
1947	KMI 12, Flaget 0	TD: DeGasperis, Prosack -55 yd run
1947	KMI 44, Lexington Lafayette 0	TD: Bob Ray -4, (xpts -2), Prosack, Davis, Head
1947	KMI 30, Jeffersonville (IN) 0	TD: Prosack -2, Ray -2, McQuade
1947	KMI 27, Indianapolis Park 0	
1946	KMI 19, Anchorage 13	TD: King -2, Ray
1946	KMI 24, Jeffersonville (IN) 0	TD: Ray, Frazier, King
1946	KMI 25, St. Xavier 14	TD: Ray -2 (27 yard run, 31 yd reception), Smith, King
1946	KMI 51, Calhoun (GA) 0	TD: King, Smith Crutcher, Davis
1946	KMI 13, Danville 12	TD: Jenks winning score
1945	KMI 26, St. Xavier 6	TD: Hall 45 yard run, Head, King, Schulze Interception Return
1945	KMI 13, Jeffersonville (IN) 6	
1945	KMI 58, Anchorage 0	TD: Lenhardt, Hall, Schulze, King
1945	KMI 39, Indianapolis Park	TD: Hall, King, Gysin, Schulze

1945	KMI 58, Flaget 0	
1944	KMI 32, Anchorage 0	TD: Finnegan, Ross
1944	KMI 27, St. Joseph Prep	Floan, Fournier exceptional defensive plays
1944	KMI 56, Jeffersonville (IN) 6	TD: Head, Sharer, Defensive star: Ross
1943	KMI 6, Anchorage 0	TD: Jimmy Ross
1943	KMI 38, Tompkinsville 0	TD: Combs, Beck (2), Alfs, Irwin, Puryear
1942	KMI 13, Cincinnati Elder 0	TD: Sharp, Atherholt
1942	KMI 29, Prestonsburg 0	TD: Marseilles -2, Sharp, B. Smith
1941	KMI 21, St. Xavier 0	Game ball can be seen at KCD Brown Upper School Bldg
1940	KMI 41, Okolona 0	Prentice, Stern –great pass receiving performances
1940	KMI 13, New Albany 7	TD: Parrish -2
1937	KMI 19, Gordon Lee 6	
1935	KMI 33, Lindsey-Wilson	Hobson, Brislan, Carlton excellent play
1935	KMI 13, Castle Heights Military Academy	Crowd over 5,000
1935	KMI 7, Millersburg Military Institute 0	TD: Bigelow
1931	KMI 25, U of L Frosh 0	TD: Polio 80 interception return
1931	KMI 20, McCallie (TN) 6	TD: Stickann 70 run
1930	KMI 20, Baylor 6	Doehring 65 yard pass
1930	KMI 13, Butler Frosh 0	Allowed only 3 first downs, played at Manual Stadium
1928	KMI 18, DuPont Manual 0	Hammack: exceptional play (end)
1927	KMI 6, Columbia Military Academy 0	TD: Wax, 3 goal line stands
1927	KMI 32, Glasgow 0	Defeated Southern State Conference Champions



## **KMI KAYDET SOCCER**

Established Fall 1966

### **KMI SOCCER NOTABLE SEASON RECORDS**

1969	8 Wins, 1 Loss	Goals: Phillips -15
1968	4 Wins, 2 Losses, 5 Ties	Goals: Williams -10, Murphy -10, Assists: Williams -6
1966	4 Wins, 1 Loss, 1 Tie	High Scorers: Watson, Murphy, Defense: Koplitz

### **KMI SOCCER NOTABLE SCORES**

1968	KMI 2, Trinity 0
1968	KMI 2, Westport 1



## **KMI KAYDET BASKETBALL**

### **KMI BASKETBALL SEASON HONOR ROLL**

1950	Undefeated Season	17 Wins, 0 Losses	Captain: William Michael
1947	Undefeated Season	27 Wins, 0 Losses	
1942	Undefeated Season		
1936	Undefeated Season	16 Wins, 0 Losses	Captain: Brislan
1934	Undefeated Season		
1947	27 Wins, 0 Loss	John Engberg: 312 points	
1940	18 Wins, 4 Losses	Finished with 8 straight victories	
1948	16 Wins, 1 Loss	John DeGasperi 212 points, Bill McQuade 169 points	
1945	16 Wins, 4 Losses	Sumner Tilson: 178 points	
1956	14 Wins, 7 Losses	School's second appearance in Regional, Florida Sweet 16	

1963	12 Wins, 8 Losses	First place: White Sands Conference
1946	12 Wins, 4 Losses	Captain: Chuck Binnie
1954	12 Wins, 5 Losses	Captain: Fred Vogel, Leading Scorer: Warren 311 pts
1955	13 Wins, 9 Losses	All starters scored over 200 pts, Captain: Tom Craft
1943	13 Wins, 3 Losses	11 straight victories in Florida
1952	10 Wins, 3 Losses	
1944	7 Wins, 4 Losses	O'Rorke 78 points
1938	6 Wins, 5 Losses	Head Coach Captain Weber
1930		Captain: Wayne Whipper, Center

## **KMI BASKETBALL NOTABLE SCORES**

1971	KMI 67, Gallatin County 54 Brooks: 15	1958	KMI 62, Jesuit 58 Jim Hodges: 29
1970	KMI 40, Cardinal Mooney 39	1956	KMI 70, Ft. Myers 65 John Haner: 37
1969	KMI 85, Cypress Lakes 63 Foster: 25, Bardwell: 22	1956	KMI 63, Boca Ciega 46 Knezevich: 25, Haner: 12
1969	KMI 67, Cardinal Money 37 Foster: 20, R. Richmond: 13	1954	KMI 64, Seabreeze 51 Leaders scorers: Warren, Kraft
1969	KMI 82, Palmetto 70	1954	KMI 57, Miami Tech 49 Warren: 20, Kraft: 12, Vogel: 10
1968	KMI 76, Cypress Lakes 72	1954	KMI 74, Plant 67 Ragus: 22, Warren: 21, Kraft: 20
1967	KMI 77, Cypress Lakes 62 Thompson: 27, Kluge: 14	1950	KMI 90, Florida Military Academy 16 New school scoring record
1967	KMI 73, Palmetto 72 Kluge: 25, Thompson: 14	1950	KMI 46, Redland 35
1966	KMI 67, North Fort Myers 59 Skelton: 22, Johnston: 19	1948	KMI 39, Riverside Military 28
1966	KMI 75, Charlotte County 65 Kluge: 24, Teetor: 13	1948	KMI 43, Ponce de Leon 41
1965	KMI 67, North Fort Myers 49 Lagenaur: 26, Skelton: 14	1948	KMI 39, St. Leo Academy 37
1965	KMI 46, Riverview 44 Lagenaur: 18, Hepler: 11	1947	KMI 50, St. Leo Academy 33
1965	KMI 79, Palmetto 68 Prewitt: 26, Hepler: 24	1947	KMI 48, Florida Military Institute 26
1964	KMI 72, Charlotte County 70 Lagenaur, Prewitt: 19	1947	KMI 86, Labell (FL) 43
1963	KMI 51, Venice (FL) 31 Cunningham: 19	1947	KMI 77, Pahokee 24
1963	KMI 63, Tampa Jesuit 52 Nuckolls: 18	1946	KMI 31, Martin (FL) 28
1962	KMI 71, Jesuit 53 Danahy: 20, Toncray: 14	1946	KMI 40, Punta Gorda 12
1962	KMI 79, Winter Haven 75 OT game, Danahy: 22, Nuckolls: 19,	1946	KMI 28, Sarasota 16
1962	KMI 78, Venice 66 Danahy: 34, Nuckolls: 13	1945	KMI 30, Crestwood 26
1960	KMI 77, Bishop Barry 57 Kaufman season lead scorer: 13.1 avg)	1945	KMI 30, Flaget 26
1960	KMI 42, Riverview 35 (OT)	1945	KMI 40, Ft. Myers 27
1958	KMI 110, St Leo (FL) 72 New school scoring record	1945	KMI 33, West Palm Beach 30
		1944	KMI 50, Bedford 12
		1944	KMI 52, Arcadia 31
		1943	KMI 46, Ormsby Village 24
		1943	KMI 63, Sarasota Air Base 47
		1940	KMI 39, Eminence 18
		1940	KMI 30, St. Petersburg Jr. College 14
		1940	KMI 51, Florida Military Institute 29
		1940	KMI 30, Ft. Myers 17
		1940	KMI 49, Riverside Military Institute 17
		1936	KMI 62, Holy Trinity 30
		1936	KMI 41, Boca Grande 19



# **KMI KAYDET SWIMMING AND DIVING**

## **KMI SWIMMING AND DIVING STATE CHAMPIONSHIPS**

1956 4<sup>th</sup> place (Class B)  
1950 4<sup>th</sup> place  
1971 5<sup>th</sup> place (Class AA)

## **KMI SWIMMING AND DIVING INDIVIDUAL STATE HONOR ROLL**

### **FANCY DIVING**

**1950 EVANS STATE CHAMPION**

1971 R. Watson 5<sup>th</sup> place (Class AA) (256.85)  
1956 Drayer Whittenberg 5<sup>th</sup> place (Class B)

### **50 FREESTYLE**

**1956 ED CHENAULT STATE CHAMPION  
(Class B) (26.3)**

### **50 BACKSTROKE**

1956 Peter Crawford 3<sup>rd</sup> place (Class B)

### **75 IM**

**1956 ED CHENAULT STATE CHAMPION  
(Class B) (49.8)**

1956 Peter Crawford 3<sup>rd</sup> Place (Class B)

### **100 BREASTSTROKE**

1971 M. Johnke 5<sup>th</sup> place (Class AA) (1:16.5)

### **100 BUTTERFLY**

1971 G. Weil 3<sup>rd</sup> place (Class AA) (1:02.4)

### **200 MEDLEY RELAY**

1971 KMI STATE RUNNER-UP (Class AA)  
(1:54.3)

### **400 FREESTYLE RELAY**

1971 KMI 5<sup>th</sup> place (Class AA) (4:29.0)



# **KMI KAYDET GOLF**

## **KMI GOLF TEAM STATE CHAMPIONSHIPS**

**1956 STATE CHAMPIONS (GEORGE STIGGER, RONNIE HOWELL, DAVE PEDLEY, DICK CANON)**  
**(BRANDES)**  
1962 3<sup>rd</sup> place (Dahahy, McDermett, Rogers, Whiteway)  
1952 3<sup>rd</sup> place (Abell, Scales, Beam, Hudgins)  
1955 4<sup>th</sup> place (Stigger, Pedley, Haner, Hill)  
1951 4<sup>th</sup> place (Cannon, Hall, Brown, Buckner)  
1953 6<sup>th</sup> place (Scales, Beam, Hutson, Stigger)  
1954 7<sup>th</sup> place (Stigger, Hudgins, Cross, Pedley)  
1958 9<sup>th</sup> place

## **KMI GOLF REGIONAL CHAMPIONSHIPS**

1962 **SEVENTH REGION CHAMPION** (Danahy, McDermett, Rogers, Whiteway)  
1956 **SEVENTH REGION CHAMPION** (Stigger, Howell, Pedley, Canon)  
1953 **SEVENTH REGION RUNNER-UP** (Beam, Hutson, Scales, Stigger)  
1969 East Jefferson County Regional 4<sup>th</sup> place  
1970 East Jefferson County Regional 9<sup>th</sup> place  
1971 East Jefferson County Regional 10<sup>th</sup> place  
1967 East Jefferson County Regional 10<sup>th</sup> place

## **KMI GOLF INDIVIDUAL STATE HONOR ROLL** (minimum top 50 finish)

<b>1961</b>	<b>TOM PARKHILL</b>	<b>STATE CHAMPION</b>
<b>1956</b>	<b>GEORGE STIGGER</b>	<b>STATE CHAMPION</b>
<b>1955</b>	<b>GEORGE STIGGER</b>	<b>STATE CHAMPION</b>
<b>1936</b>	<b>JIM BURKHOLDER</b>	<b>STATE CHAMPION</b>

1956	<b>RONNIE HOWELL</b>	STATE RUNNER-UP
1952	<b>EMBREY ABELL</b>	STATE RUNNER-UP

1951	<b>MICKEY CANNON</b>	3 <sup>rd</sup> place
1962	<b>PAT DANAHY</b>	5 <sup>th</sup> place
1953	<b>JOE SCALES</b>	6 <sup>th</sup> place
1951	<b>HERMAN HALL</b>	6 <sup>th</sup> place
1954	<b>GEORGE STIGGER</b>	8 <sup>th</sup> place
1952	<b>JOE SCALES</b>	11 <sup>th</sup> place
1962	<b>BRUCE MCDERMETT</b>	14 <sup>th</sup> place
1956	<b>DAVE PEDLEY</b>	14 <sup>th</sup> place
1951	<b>JOHN Y BROWN, JR.</b>	14 <sup>th</sup> place
1958	<b>COMBS</b>	16 <sup>th</sup> place
1955	<b>DAVE PEDLEY</b>	16 <sup>th</sup> place
1961	<b>DAVE JOHNSON</b>	20 <sup>th</sup> place
1953	<b>BILL BEAM</b>	22 <sup>nd</sup> place
1956	<b>DICK CANON</b>	24 <sup>th</sup> place
1962	<b>JOE ROGERS</b>	27 <sup>th</sup> place

1954	<b>CHARLES HUDGINS</b>	29 <sup>th</sup> place
1952	<b>BILL BEAM</b>	30 <sup>th</sup> place
1958	<b>RODRIGUEZ</b>	31 <sup>st</sup> place
1971	<b>BRENT RICE</b>	32 <sup>nd</sup> place
1956	<b>MACDADE</b>	34 <sup>th</sup> place
1955	<b>JOHN HANER</b>	35 <sup>th</sup> place
1954	<b>ROBERT CROSS</b>	38 <sup>th</sup> place (tie)
1954	<b>DAVE PEDLEY</b>	38 <sup>th</sup> place (tie)
1958	<b>WATERWORTH</b>	40 <sup>th</sup> place
1953	<b>RICHARD HUTSON</b>	40 <sup>th</sup> place
1954	<b>BILL BEAM</b>	44 <sup>th</sup> place
1955	<b>JOHN HILL</b>	45 <sup>th</sup> place
1952	<b>CHARLES HUDGINS</b>	47 <sup>th</sup> place
1953	<b>GEORGE STIGGER</b>	49 <sup>th</sup> place
1955	<b>TOM CRAFT</b>	50 <sup>th</sup> place
1969	John Richmond	State Qualifier
1968	Chip Howell	State Qualifier
1966	Corky Kleinedler	State Qualifier
1962	Tim Whiteway	State Qualifier
1961	Kip Groce	State Qualifier
1958	McCord	State Qualifier
1951	Bill Buckner	State Qualifier



## **KMI KAYDET BASEBALL**

### **KMI BASEBALL DISTRICT CHAMPIONSHIPS**

1951	<b>29<sup>th</sup> DISTRICT CHAMPION</b>
1965	26 <sup>th</sup> District Runner-Up
1955	26 <sup>th</sup> District Runner-Up
1953	26 <sup>th</sup> District Runner-Up

### **KMI BASEBALL NOTABLE SCORES**

1969	KMI 9, LCD 3	Tommy Buckner: 1 HR, 2 RBI
1968	KMI 4, Eastern 1	1955 KMI 16, LCD 9
1968	KMI 5, Waggener 2	Knezevish: 1HR
	WP: John Murphy -9K, 2B -Jim Richmond	1955 KMI 5, Fern Creek 0
1965	KMI 8, Westport 7	2 RBI: Charles Upton
	WP: Glenn Prezocki, 2B: Dave Howell	1955 KMI 7, Southern 2
1965	KMI 15, LCD 6	HR: Charles Upton, Tom Buckner
	WP: Glenn Prezocki, HR: Stephens	1954 KMI 9, Fern Creek 7
1964	KMI 12, Aquinas Prep 5	HR: Joe Scales 9 <sup>th</sup> inning
	WP: Glenn Prezocki, 4 RBI: Roy Toqunour	1952 KMI 6, Eastern 4
1963	KMI 13, Venice 0	WP: Dasenbrock, HR: Joes Scales
1958	KMI 7, Fern Creek 5	1952 KMI 8, Fern Creek 5
	WP: Wally Montgomery, 2B: Jay Lundstrom	1950 KMI 11, Florida Military Acad 4
1958	KMI 10, Eastern 8	WP: Townsend
	Jay Lundstrom: 1 HR, 5 RBI	1950 KMI 16, Fort Meyers 0
1958	KMI 12, Southern 5	WP: Brumback



1948 KMI 3, Millersburg Military Institute 0  
 WP: Schaeffer 12 strikeouts  
 1948 KMI 16, Fort Meyers 2 Bob Ray: 2 HR  
 1947 KMI 11, Ft. Myers 1  
 1946 KMI 10, Ft. Myers 2 W: J. Rohde  
 1944 KMI 11, Venice 2  
 1943 KMI 16, St. Xavier 4  
 1943 KMI 8, Sarasota High 1  
 1941 KMI 3, Ft. Myers

WP: Cunningham  
 1941 KMI 2, Jefferson (FL)  
 WP: Francis (allowed 1 hit)  
 1938 KMI 11, Florida Military Institute 2  
 1938 KMI 6, Park (IN) 2  
 1938 KMI 13, Lyndon 3  
 1938 KMI 10, Saint Xavier 4  
 1936 KMI 7, Lindsey-Wilson 0  
 1936 KMI 8, Louisville Male 0 3B: Martin



## KMI KAYDET TENNIS

### KMI TENNIS STATE CHAMPIONSHIPS

1957 STATE RUNNER-UP

### KMI TENNIS TOURNAMENT CHAMPIONSHIPS

1941 Falls City Tournament Champion  
 1942 Falls City Tournament Champion  
 1943 Falls City Tournament Champion

### KMI TENNIS INDIVIDUAL STATE HONOR ROLL

#### SINGLES

1958	STUART COHEN	STATE SINGLES RUNNER-UP
1957	Stuart Cohen	Semifinalist
1969	J. B. Howell	Semifinalist
1958	Jerry Ducker	2 <sup>nd</sup> round
1955	Sonny Riggs	2 <sup>nd</sup> round

1957	STUART COHEN & DAVID YORK	STATE DOUBLES RUNNER-UPS
------	---------------------------	--------------------------

1969 KMI Semifinalist  
 1961 KMI Quarterfinalist  
 1958 Stuart Cohen & Jerry Ducker 1<sup>st</sup> round

#### DOUBLES

1934	VINCENT ROBINSON & BOB ROBERTS	STATE DOUBLES CHAMPIONS
------	--------------------------------	-------------------------

#### TEAM CAPTAINS

1962 Team Captain, Tony Matos  
 1960 Team Captain, Duckor  
 1958 Team Captains, Stuart Cohen & Rugeley DeVan, III  
 1954 Team Captains, Joe Butchers & Al Berentsen  
 1950 Team Captain, James Gwaltney



## KMI KAYDET TRACK AND FIELD

### KMI TRACK AND FIELD STATE CHAMPIONSHIPS

1929	3 <sup>rd</sup> place	
1969	9 <sup>th</sup> place	(Class A)
1957	9 <sup>th</sup> place	
1968	11 <sup>th</sup> place	(Class A)
1970	13 <sup>th</sup> place	(Class A)
1966	17 <sup>th</sup> place	(Class AA)
1967	23 <sup>rd</sup> place	(Class A)
1961	32 <sup>nd</sup> place	

### KMI TRACK AND FIELD REGIONAL CHAMPIONSHIPS

1971	REGIONAL RUNNER-UP
1970	REGIONAL RUNNER-UP
1969	REGIONAL RUNNER-UP
1968	REGIONAL RUNNER-UP

### KMI TRACK AND FIELD INDIVIDUAL STATE HONOR ROLL

**INDIVIDUAL EVENTS-****100 YARD DASH**

1966 BOBBY BEST STATE RUNNER-UP  
 1969 Larry Rubin State Qualifier (10.7)

**120 YARD HURDLES**

1970 Alex Parks State Qualifier (16.7)

**180 YARD HURDLES**

1961 Chris Crawford 5<sup>th</sup> place  
 1971 Kirtpatrick State Qualifier (22.5)  
 1970 Alex Parks State Qualifier (21.6)  
 1968 Daven Dodrell State Qualifier (23.0)

**220 YARD DASH**

1961 Ed Delucia 6<sup>th</sup> place  
 1969 Larry Rubin State Qualifier (23.8)

1971 Kennedy Simpson State Qualifier (23.3)

**440 YARD DASH**

1968 Rocky Reiff 3<sup>rd</sup> place  
 1969 Rocky Reiff 4<sup>th</sup> place (52.9)

**880 YARD RUN**

1969 ROCKY REIFF STATE RUNNER-UP  
 (2:05.2)

**RELAY EVENTS-****880 YARD RELAY**

**1968 -STATE CHAMPIONS (DAN SULLIVAN,  
 ROCKY REIFF, JEFF KAUFMANN, WARD  
 IRVIN) (1:34.0)**

**MILE RELAY**

1969 4<sup>th</sup> place (Greenwell, Gillis, Irvin, Reiff)  
 (3:40.5)

**FIELD EVENTS-****HIGH JUMP**

1951 DON KURFEES  
 STATE RUNNER-UP  
 1970 Harold Rosenbaum 5<sup>th</sup> place (5'8")

**DISCUS**

**1957 WILLIAM MARTIN  
 STATE CHAMPION (145'10.25")**  
 1970 Sam Hall 4<sup>th</sup> place (126'10.75")  
 1971 Cook State Qualifier (126")

**SHOT PUT**

1957 William Martin 3<sup>rd</sup> place  
 1970 Greg Ikerd 4<sup>th</sup> place (46'10.5")  
 1967 Gary Kluge 4<sup>th</sup> place (51'2.5")

**POLE VAULT**

1969 Jim Wander 3<sup>rd</sup> place (10'7")  
 1970 Jim Wander 4<sup>th</sup> place (10'6")  
 1967 Keith Montgomery 5<sup>th</sup> place (11'6")  
 1957 Chris Crawford 5<sup>th</sup> place (11'5")

**KMI TRACK AND FIELD INDIVIDUAL RECORD HONOR ROLL****INDIVIDUAL EVENTS-****100 YARD DASH**

1. Bobby Best 10.0 (1966)  
 2. Bob Ray 10.2 (1948)  
 3. J.T. Smith 10.3 (1961)  
 4. George Getschow 10.4 (1936)  
 5. Kennedy Simpson 10.7 (1970)  
 6. Larry Rubin 10.7 (1969)  
 7. Chris Curry 10.7 (1960)  
 8. Rocky Reiff 10.8 (1969)

**120 YARD LOW HURDLES**

1. Alex Parks 16.7 (1970)  
 2. William Schulze 17.4 (1948)  
 3. Havens 17.8 (1948)  
 4. Thompson 18.0 (1948)

**180 YARD HIGH HURDLES**

1. Kirtpatrick 22.5 (1971)  
 2. Alex Parks 21.6 (1970)  
 3. Daven Dodrell 23.0 (1968)

**200 YARD HIGH HURDLES**

1. John Davis 24.7 (1948)  
 2. William Schulze 26.3 (1948)

**220 YARD DASH**

1. Bob Ray 23.2 (1948)  
 1. Bobby Best 23.2 (1966)  
 3. Kennedy Simpson 23.3 (1971)  
 4. J. T. Smith 23.6 (1961)  
 5. Butch Bennett 23.8 (1970)  
 6. Rocky Reiff 24.1 (1967)

**440 YARD DASH**

1. Rocky Reiff 51.5 (1968)  
 2. McGahey 54.5 (1948)  
 3. Joplin 57.3 (1948)

**880 YARD RUN**

1. Rocky Reiff 2:02.4 (1969)  
 2. Fugate 2:18.9 (1948)

**RELAY EVENTS-****440 YARD RELAY (4x100 yards)**

1. McGahey, King, Ray, Hall  
 : 47.1 (1948)

**880 YARD RELAY (4x220 yards)**

1. Dan Sullivan, Jeff Kaufmann, Rocky Reiff,  
Ward Irvin 1:34.0 (1968)
2. Frazier, Seagram, Davis, Ray  
1:37.2 (1948)
3. Bryan Cockerell, Tim Morrison, Bruce Quenneville,  
Jed Miller 1:37.5 (1964)
4. Ed DeLucia, Parker, Chris Crawford, J. T. Smith  
1:38.7 (1961)
5. Rocky Reiff, George Ward, Nat Irvin, Larry Ruben  
1:39.0 (1969)

**MILE RELAY (4x440 yards)**

1. Henry Greenwell, Mickey Gillis, Nat Irvin,  
Rocky Reiff, 3:37.8 (1969)
2. Creed Smith, Jeremy Schnur, Patrick Pinson,  
Maurice Jones 3:49.6 (1956)
3. Jonathon Coppock, John Moore, Lloyd McMillan,  
Stollar 3:55.0 (1961)
4. Kraemer, Miles, Binnie, Dennewitz  
3:56.1 (1948)

**FIELD EVENTS-****HIGH JUMP**

1. Don Kurfees 5'10" (1951)
2. Harold Rosenbaum 5'08" (1970)
2. Keith Meers 5'08" (1968)
2. Service 5'08" (1948)

**LONG JUMP**

1. Jerry Cockrell 19'11" (1965)
2. Hall 19'10" (1948)
3. George Ward 19'06" (1969)
3. Carmicheal 19'06" (1944)
5. Dan Sullivan 18'10.5" (1968)
6. Franklin Woeste 18'08" (1966)
7. Donald Sherer 18'07" (1956)
8. Seagram 18'03.5" (1948)
9. Kimmering 17'09" (1961)

**TRIPLE JUMP**

1. Keith Montgomery 37'08" (1968)
2. Eric Schiefer 37'06" (1970)

**DISCUS**

1. Sam Hall 140'10" (1970)
2. George Lawson 136'02.75" (1948)  
Set Kentucky School Record
3. Vic Cook 126'00" (1971)
4. Bill Rice 123'06" (1964)
5. Longacre 120'05" (1948)
5. Ben Cundiff 117'01" (1966)
6. Maurice Jones 116'05.75" (1956)
7. Jim Head 119'00" (1946)

**SHOT PUT**

1. Urbas 51'05.5" (1936)
2. Gary Kluger 51'02.5" (1967)
3. Greg Ikerd 49'02" (1970)
4. Dave Smith 46'00" (1966)
5. J.T. Smith 43'06.5" (1961)
6. Martin Gennet 43'06" (1948)
7. Jim Head 40'10" (1948)

**POLE VAULT**

1. Pete Lynbaugh 12'00" (1971)
2. Keith Montgomery 11'06" (1967)
3. James Wander 11'00" (1969)
4. Bert Dickey 10'10" (1943)
4. Seagram 10'06" (1948)
5. James Stillwell 10'00" (1960)