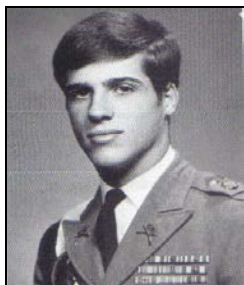


# KENTUCKY MILITARY INSTITUTE

**"KAYDETS"**

**KCD ADOPTED SCHOOL, 1845-1971**



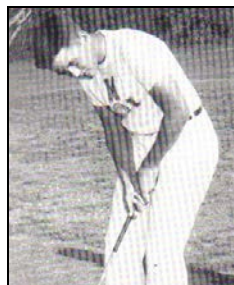
**DANNY SULLIVAN**

**1968 -TRACK MEMBER -STATE  
CHAMPION 880 YARD RELAY  
TEAM (WITH REIFF,  
KAUFMANN, IRVIN) 1:34.0  
1967 -CAPTAIN, MVP SOCCER**



**DANNY SULLIVAN**

**1968 KMI GRADUATE  
-1985 INDIANAPOLIS 500  
WINNER**



**GEORGE STIGGER**

**"ROYAL BEARCAT  
SOCIETY"  
(INDUCTED 2009)  
1956 -GOLF STATE CHAMPION  
1955 -GOLF STATE CHAMPION  
1954 -GOLF STATE 8<sup>TH</sup> PLACE  
1953 -GOLF STATE 49<sup>TH</sup> PLACE**



**BOB RAY**

**BEARCAT HALL OF FAME  
(INDUCTED 2008)  
1947 -FOOTBALL TEAM CAPTAIN,  
14 CAREER TOUCHDOWNS  
UNDEFEATED KMI TEAM  
(SHRINE BOWL CHAMPIONS,  
14-0 OVER ST. XAVIER)  
ATTENDANCE: 8,000**



**CHARLES HUDGINS**

**1954 -GOLF STATE 29<sup>TH</sup> PLACE  
1952 -GOLF STATE 47<sup>TH</sup> PLACE**



**JIM BURKHOLDER**

**1936 -GOLF STATE CHAMPION**



**GEORGE EVANS**

**1950 -DIVING STATE CHAMPION**



**WILLIAM BRISLAN**

**CAPTAIN, STARTING GUARD  
1936 UNDEFEATED BASKETBALL  
TEAM (16 WINS, 0 LOSSES)**



**MAJOR**

**JOHN E. "RABBIT" PACE**

**1947-54 ATHLETIC DIRECTOR,  
1927-57 HEAD FOOTBALL COACH**

**1947 -UNDEFEATED 10-0  
FOOTBALL SEASON**



**1908 KMI BASEBALL TEAM**



**DAVE PEDLEY**

**1956 -GOLF STATE 14<sup>TH</sup> PLACE  
1955 -GOLF STATE 16<sup>TH</sup> PLACE  
1954 -GOLF STATE 38<sup>TH</sup> PLACE**



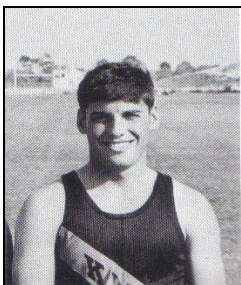
**WILLIAM MICHAEL**

**1950 -CAPTAIN, TOP SCORER  
UNDEFEATED (17 W, 0 L)  
BASKETBALL TEAM**

# KENTUCKY MILITARY INSTITUTE

**"KAYDETS"**

KCD ADOPTED SCHOOL, 1845-1971



**ROCKY REIFF**

1969 -TRACK STATE RUNNER-UP  
(880 YARDS -2:05.2)  
-STATE 4<sup>TH</sup> PLACE  
(440 YARDS -52.9)  
1968 -TRACK MEMBER -STATE  
CHAMPION 880 YARD  
RELAY (W/ SULLIVAN,  
KAUFMANN, IRWIN -1:34.0)  
-STATE 3<sup>RD</sup> PLACE  
(440 YARDS)



**DON KURFEES**

1951 -TRACK STATE RUNNER-UP  
(HIGH JUMP)



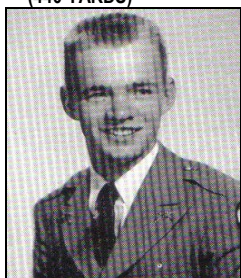
**BOBBY BEST**

1966 -TRACK STATE RUNNER-UP  
(100 YARD DASH, 10.0)



**DAVE JOHNSON**

1961 -BASKETBALL, SARASOTA  
COUNTY LEADING SCORER,  
(27.6 GAME AVG,  
634 POINTS)



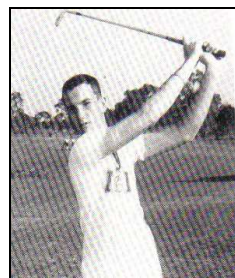
**BRUCE WARREN**

1954 -BASKETBALL LEADING  
SCORER -311 POINTS  
(TEAM 12 WINS, 5 LOSSES)



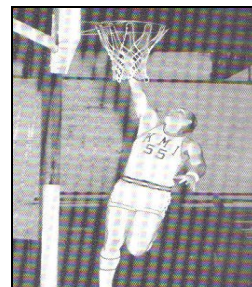
**COLONEL CHARLES BLAIR**

**RICHMOND**  
1925-1965 PRESIDENT,  
KY MILITARY INSTITUTE



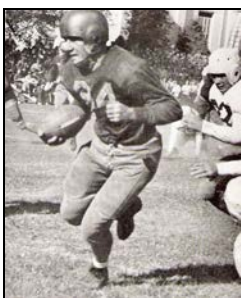
**BILL BEAM**

1953 -GOLF STATE 22<sup>ND</sup> PLACE  
1952 -GOLF STATE 30<sup>TH</sup> PLACE  
1954 -GOLF STATE 44<sup>TH</sup> PLACE



**GARY KLUGE**

1967 -BASKETBALL LEADING  
SCORER (17.7 GAME AVG,  
354 POINTS)



**BILL ROWEKAMP**

1948 -KENTUCKY STATE  
LEADING SCORER  
-153 SEASON POINTS  
-28 SEASON TOUCHDOWNS

**TOM PARKHILL**  
1961 -GOLF, STATE CHAMPION



**STUART COHEN**

1958 -TENNIS STATE SINGLES  
RUNNER-UP  
1957 -TENNIS STATE DOUBLES  
RUNNER-UP (W/ D. YORK)  
STATE SINGLES  
SEMIFINALIST